

# David Smith Contractors Ltd

## Civil & Demolition Contractors

### Case Study

**Lochalsh & SW Ross Health**

**Broadford, Isle of Skye**

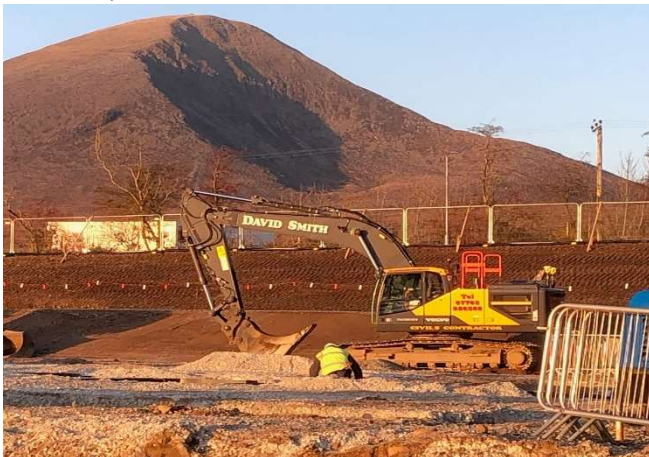
**Main Contractor: Balfour Beatty**



#### Project Challenges:

Ground conditions, areas of unidentified rock, have proved challenging in regard to drainage and services installation. DSC provided the client a revised design in order to alter the mainline drainage route to avoid the rock and provide a cost effective solution.

Project location makes it difficult to source specified material and subcontractors. Alternative products are offered by DSC in order to overcome the issue.



#### Project Description:

Formation of a new Health Centre in Broadford, Isle of Skye as part of the HUB Scotland Framework. DSC awarded groundworks package which contains all earthworks, substructure, concrete floors, services, external plant area and final hard landscaping. There was also an existing property that DSC demolished prior to the development commencing.



#### Key Works:

16,500 M3 of topsoil and sub soil excavation carried out.

Piling platform installed to allow works to progress.

Early installation of mainline drainage in order to make use of limited space on site for the works going forward.

